



Hydraulic Reservoirs

Please find listed below your new pricing for wet tanks and hose kits. These units are available for shipment from our Distribution Center and can be mixed and matched with other products to make prepaid freight. Your current multiplier applies.



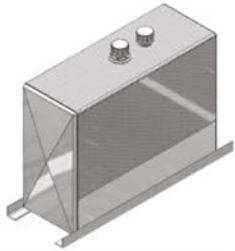
TANK PART #	Description
TA-07-SS	7 gal. Side Mount Steel (Squire)
TA-10-SS	10 gal. Side Mount Steel (Squire)
TA-15-SA	15 gal. Side Mount Aluminum (Squire)
TA-15-SS	15 gal. Side Mount Steel (Squire)
TA-25-SS	25 gal Side Mount Steel (Squire)



TANK PART #	Description
TA-100-US	100 gal. Upright Steel
TA-50-UA-STG	50 gal. Upright Steel With Site Gauge
TA-50-UP	50 gal. Upright Polyethylene
TA-50-US	50 gal. Upright Steel
TA-50-US-2-STG	50 gal. Upright Steel with 2" Ports & Site Gauge
TA-70-US	70 gal. Upright Steel
TA-70-US-STG2	70 gal. Upright Steel With Site Gauge & 2" Ports



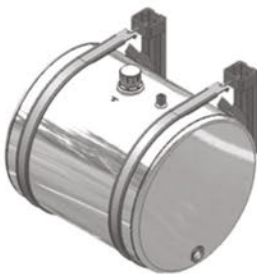
Hydraulic Reservoirs



TANK PART #	Description
TA-50-UA-2	50 gal. Upright Aluminum With 2" Ports
TA-70-UA-2	70 gal. Upright Aluminum With Carbon Steel Straps & 2" Ports
TA-70-UA	70 gal. Upright Aluminum With Carbon Steel Straps



TANK PART #	Description
TA-50-UA	50 gal. Upright Aluminum



TANK PART #	Description
TA-25-SA	25 gal. Saddle Mount Aluminum
TA-35-SA	35 gal. Saddle Mount Aluminum
TA-35-SA-S	35 gal. Saddle Mount Aluminum With Stainless Steel Straps
TA-50-SA	50 gal. Saddle Mount Aluminum
TA-50-SA-2	50 gal. Saddle Mount Aluminum With 2" Ports
TA-50-SA-S	50 gal Saddle Mount Aluminum With Stainless Steel Straps
TA-50-SA-S-STG	50 gal. Saddle Mount Aluminum With Sight Glass & Stainless Steel Straps
TA-50-SA-STG	50 gal. Saddle Mount Aluminum With Sight Glass
TA-75-SA	75 gal. Saddle Mount Aluminum With Carbon Steel Straps
TA-75-SA-S	75 gal. Saddle Mount Aluminum With Stainless Steel Straps



Hydraulic Reservoirs



TANK PART #	Description
TA-35-SS	35 Gal. Saddle Mount Steel
TA-35-SS-STG	35 gal. Saddle Mount Steel With Sight Glass
TA-50-SS	50 gal. Saddle Mount Steel
TA-75-SS	75 gal. Saddle Mount Steel

Smart Part Number Description

HSK ***L** **#** **#**
Hose Kit # of Lines Length Pressure Length Suction/Return

Hose Kits Two Line



HSK2L-12-6
HSK2L-14-6
HSK2L-16-8
HSK2L-20-12

Hose Kits Three Line



HSK3L-9-9
HSK3L-12-12